

Conventions
1. 38" Counter Height
2. tops of w all cabinets at 8'
3. Kitchen Cabinet Inventory listed clockw ise starting w ith Refrigerator
4. Island is 10' x 3' with 1 1/2" overhang; Island seating on S side has at least 16" knee space; base cabinets max 15" D

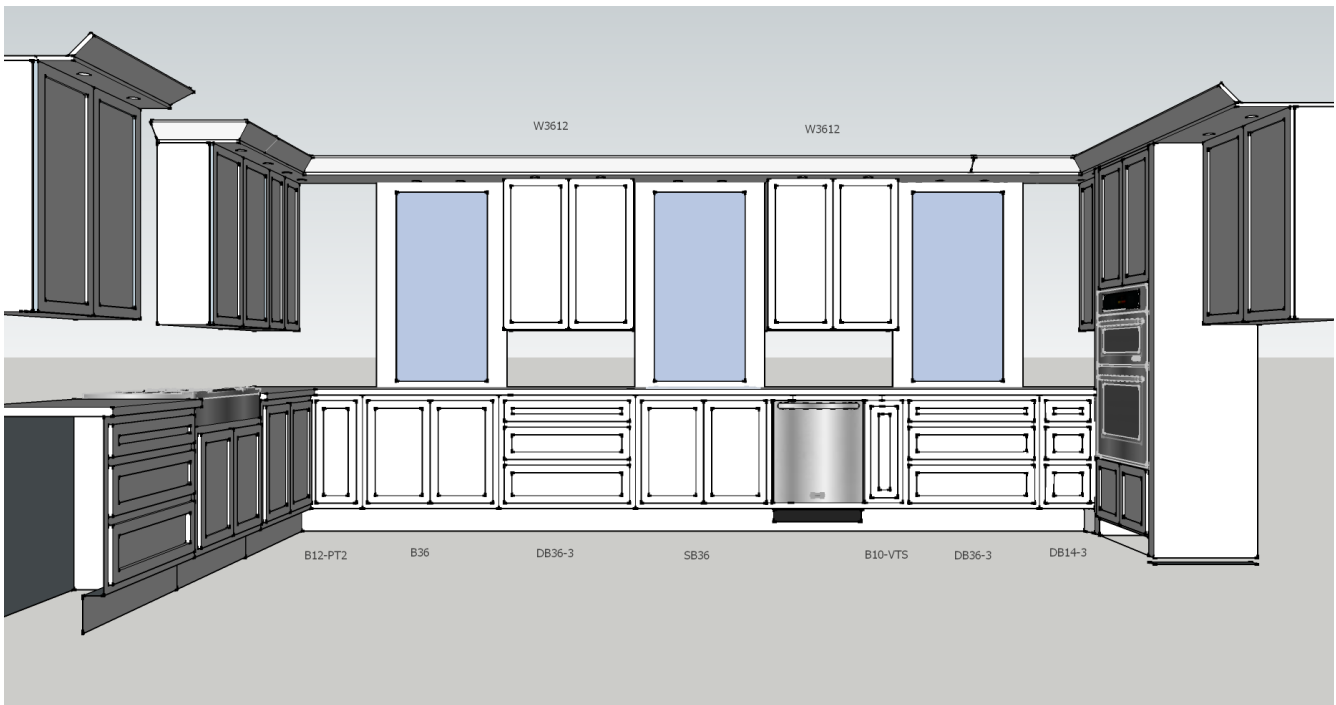
DB = drawer base
SB = sink base
W = wall
WDC = wall diagonal cabinet
WBC= wall blind cabinet
B = base
BBC = blind base cabinet
F = filler
RP = refrigerator panel
VAS = valence
VSF = vanity base
WEC = wall end cabinet
VTS = vertical tray/bake pan storage
PT = pull out tray
WS = wire shelf (15° horiz. Can storage)
OC = Oven Cabinet (w 3in L-R stiles)

Summary	
Type	Number
B10-VTS	1
B12-VTS	1
B12-PT2	2
B25	2
B36	2
B36-PT2	1
SB36	1
DB36-3	3
DB33-3	3
DB14-3	1
B41-PT2-WS2	1
OC3296-W32-DB32	1
W41	1
W3612	4
W3620	1
W2412	1
OC3696-W30-DB30-	1

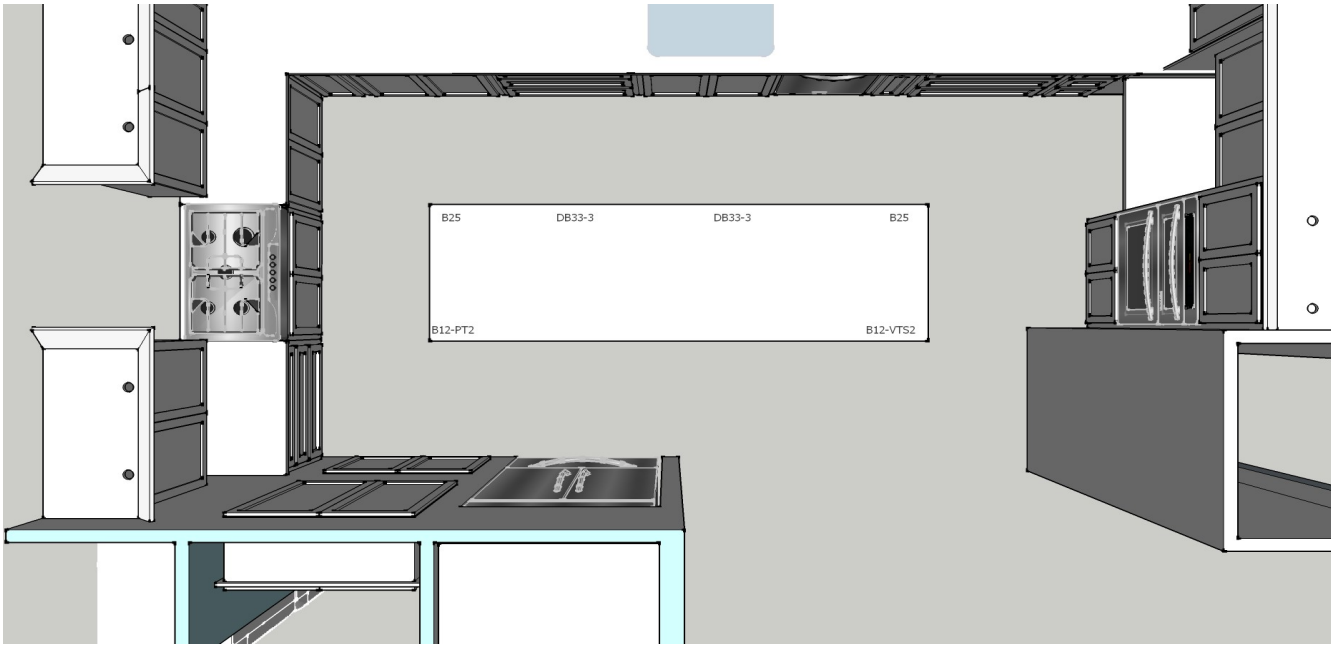
Total	26
Base	16
Wall	10
Oven	1



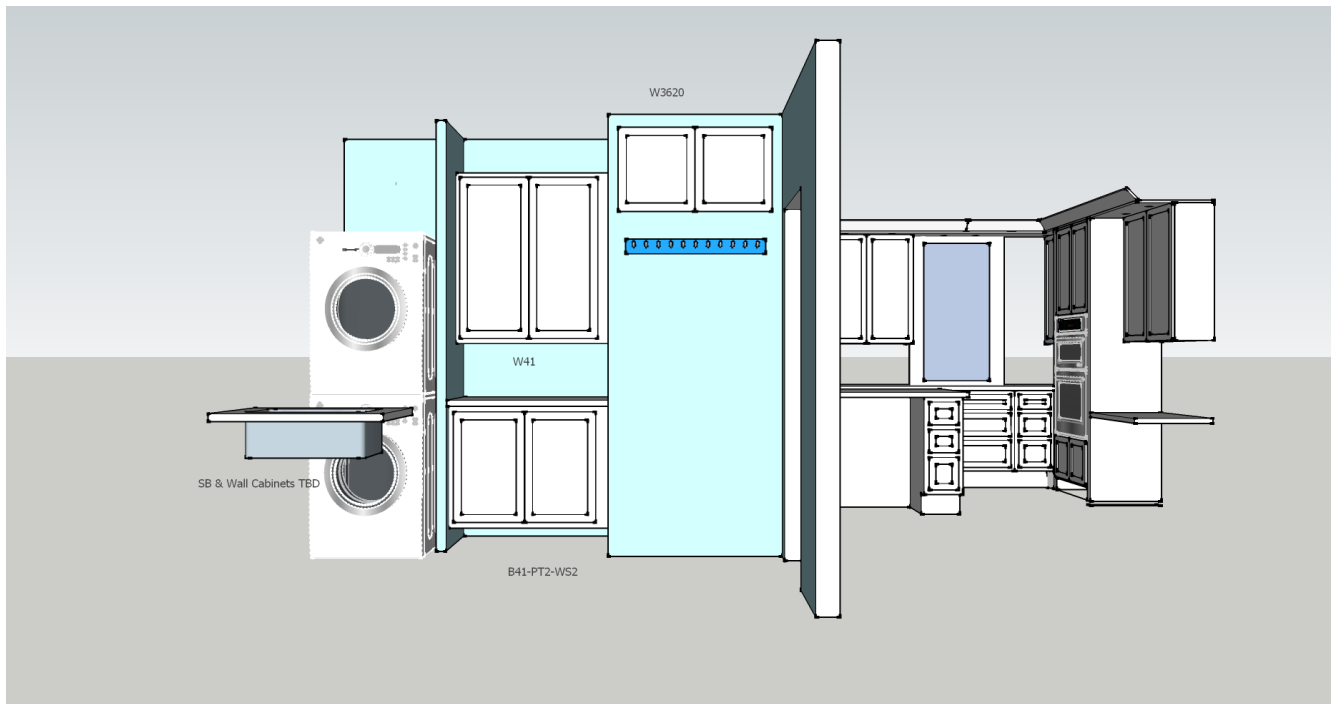
West side kitchen cabinets with 36" Bertazzoni gas stove (requires 6 1/2 " cutout from top of base cabinet).



North side kitchen cabinets. Sink is under center window



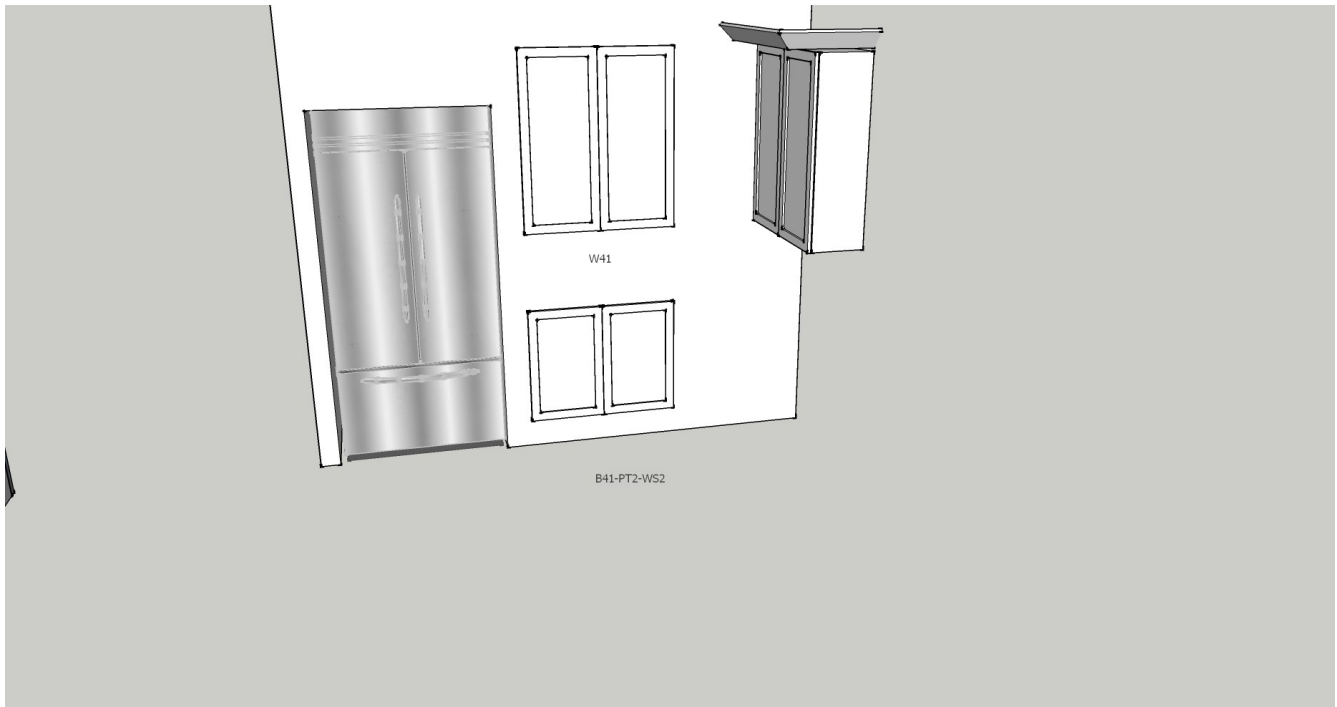
Island kitchen cabinets.



Pantry Cabinets With stacked washer and dryer along exterior west wall. Possible utility sink show on outside south wall.



West side kitchen cabinets with built in counter for desk. Oven cabinet is 32" W x 96" H x 24" D (min). Jenn-Air Combo ovens require 28 1/2" W x 24" D x 41 1/4" H cutout.



Built-in refrigerator and two pass through cabinets connecting kitchen with pantry.