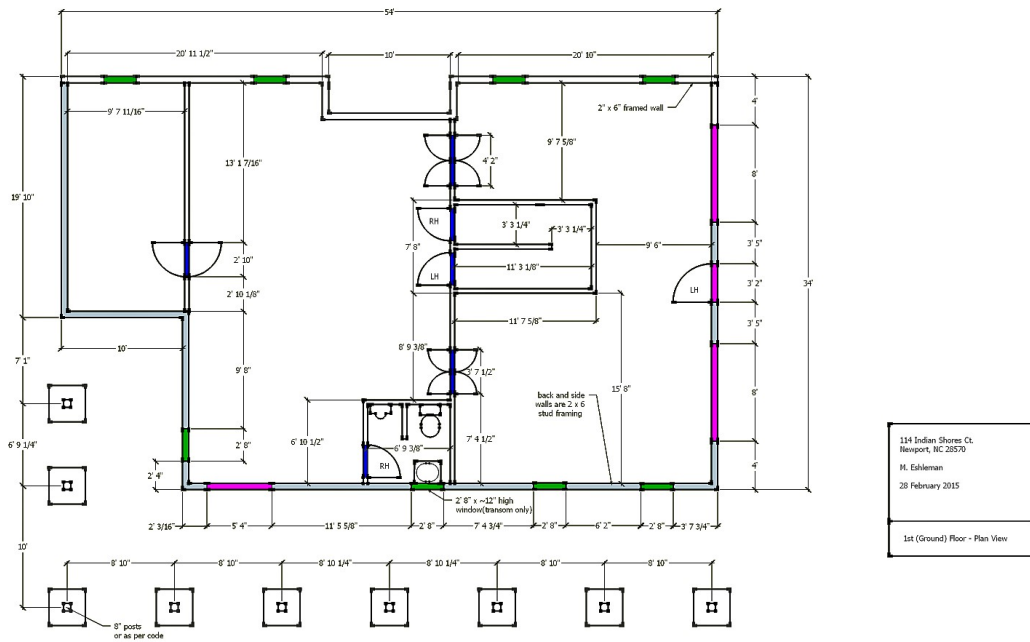
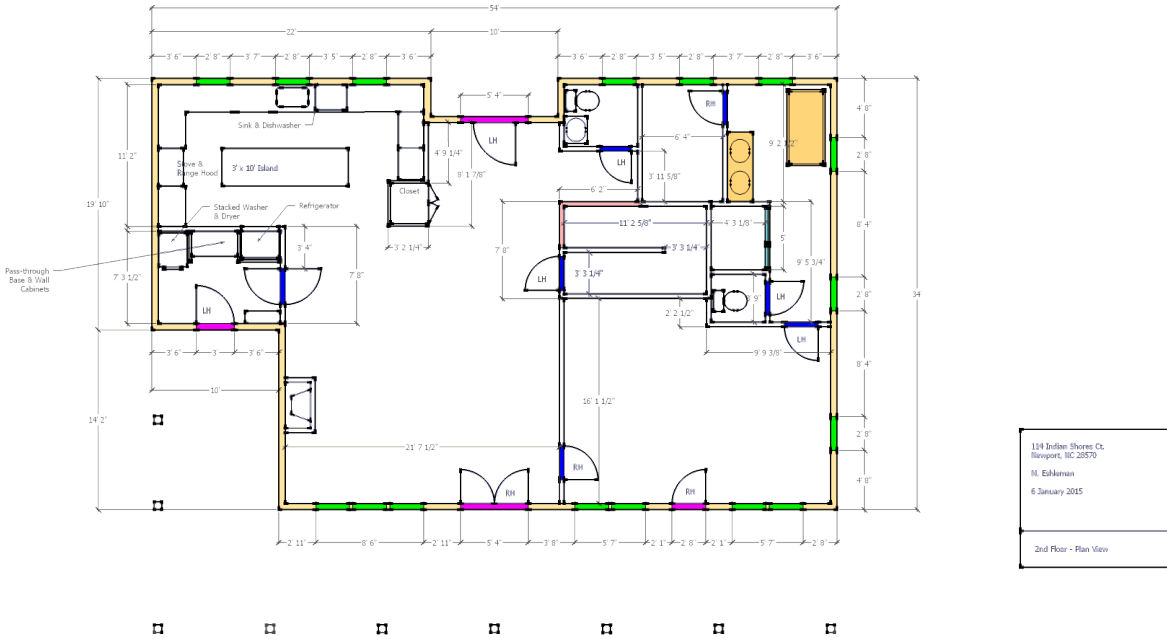




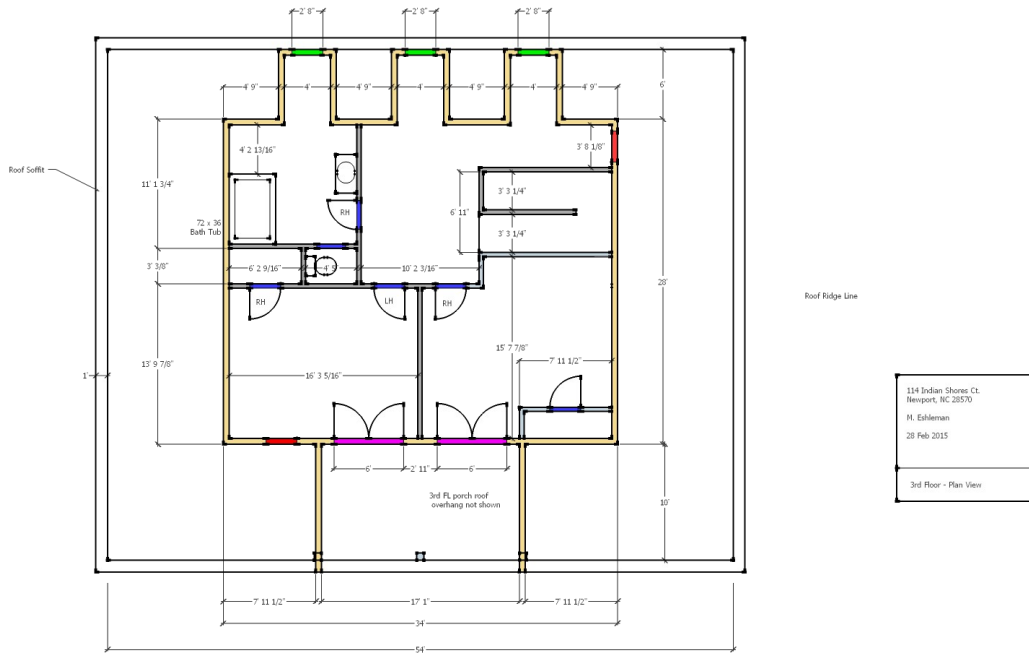
Front Elevation



1st (Ground) Floor - 1,452 ft²



2nd (Main Living Area) Floor - 1,359 ft² (Usable (minus island, counters, bath, vanities, washer/dryer, refrigerator, etc.) = 1,252 ft²)



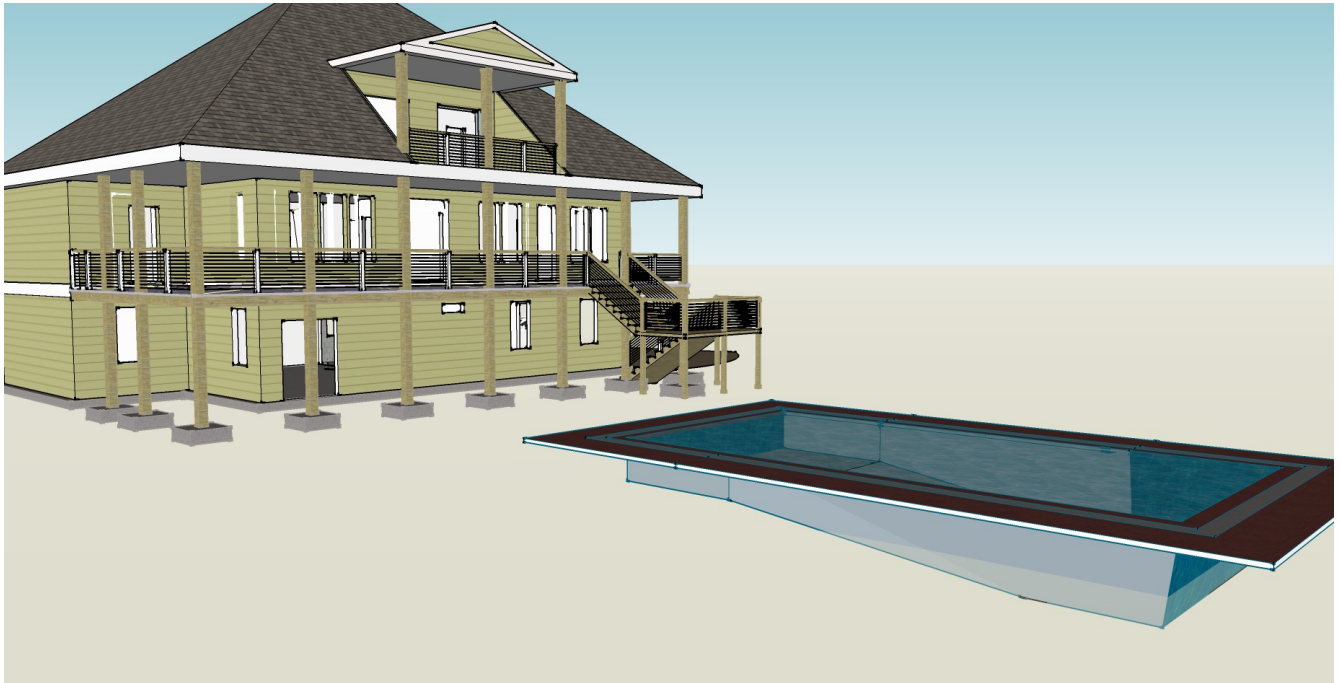
3rd Floor - 809 ft²



Aerial view showing lot boundary and 2 ft. topographic contour lines overlaid on Google Earth imagery. The house straddles the 8 ft. contour line.



View from SE. The 18' x 36' pool is not shown in this older rendering.



View from SW showing location of pool (relative to original lot elevations). The level may require some adjustment.



Rear Elevation



Proposed dock; red lines show riparian boundaries and 15 ft exclusions extended perpendicular to channels of Newport River (on left) and Harlowe Creek (on right). Neighboring lot's dock on left is already completed.

Porchs (Galleries)					
1st (Ground) FI					746.76
South		746.76	54.00	10'	
			24' 2 7/8"	10'	
2nd FI					600.00
North		60.00	6'	10'	
South		540.00	54'	10'	
			24' 2 7/8"	10'	
3rd FI					188.00
South		188.00	17' 1"	11'	

Latest Drawing 11102014_Eshleman_114_Indian_Shores.skp					
Description	Area (ft ²)	Length	Width	Perimeter	
Totals	3,637.03				
2Nd & 3rd Fl Living Area	2184.93				
Ground Floor Area	1452.1				
(See Drawing – Layer = 0_Floor_Areas 1st or Ground Floor))					Floor Tile
Ground Floor Areas	1,452.10				Err:509
Garage	603.84	32' 10"	21' 1 5/8"	131' 2 1/2"	
1/2 Bath	43.02	6' 9 3/8"	6'6"	32' 2 3/4"	43.02
Utility 1	625.27	32' 10"	21' 5 11/16"		
Utility 2	179.97	18' 8"	9' 7 11/16"	133' 4"	
Stairs (excluded from total)	91.26	11' 11 5/8"	7' 8"		
(See Drawing – Layer = 1_Floor_Areas (2nd Floor))					
1st FL Areas	1,358.38				
1 BR	317.02	21' 7 1/2"	16' 1/2"	74' 3"	
1BR WIC	61.05	9' 2 1/2"	6' 7 9/16"	31' 8 1/8"	
1 Bath	113.34	18' 8 1/2"	7' 4 9/16"	52' 2 1/8"	
1 Bath Shower	21.30	5'	4' 3 1/8"	18' 6 1/4"	
1 Bath Toilet	20.26	3' 9"	4' 3 1/8"	19' 8"	185.25
1/2 Bath	30.35	6' 7 3/8"	4' 10 3/8"	22' 2 1/2"	
LR	306.35	21' 7 1/2"	13' 5"	49' 11 1/2"	
Entry/Hall	189.86	13' 10"	14' 7 1/4"	47' 6 5/8"	
Kitchen	223.13	20' 11 3/16"	11' 1 7/8"	56' 7/8"	
Pantry	61.38	9' 7 1/2"	7' 3 1/2"	38' 9"	
Hall Closet	6.08	3' 1/2"	2'	10' 1"	
Refrigerator/Closet	8.25	3'	2' 7 1/2"	11' 7"	
Stairs (excluded from total)	91.26	11' 11 5/8"	7' 8"		
(See Drawing – Layer = 2_Floor_Areas or 3rd Floor)					
2nd Fl Areas	808.58				
BR2	211.71	12' 11 3/8"	16' 3 5/16"	58' 7 3/16"	
BR 2 Closet	14.50	6'2 9/16"	2'4"	17' 1 1/8"	
Bath 2	97.14	16' 11 5/8"	7' 1/16"	47' 11 3/8"	
Bath 2 Linen Closet	10.31	4'5"	2'4"	13' 6"	127.31
Bath 2 Toilet Stall	19.87	4'6 1/2"	4'6 1/2"	17' 10"	
BR3	200.81	12' 11 3/8"	16' 3 5/16"	58' 7 3/16"	
BR 3 Closet 1	12.47	5'4 1/8"	2'4"		
BR 3 Closet 2	12.47	5'4 1/8"	2'4"	28' 1 9/16"	
Hall Commons	229.31	21'7 7/16"	19' 8 1/8"	94' 7 1/8"	
Stairs (excluded from total)	91.26	11' 11 5/8"	7' 8"		